



Edinburgh Primary School  
97 Queens Road  
Walthamstow  
E17 8QR

Tel: 02085096180

Email: school@edinburgh.waltham.sch.uk

Website: Edinburgh.waltham.sch.uk

Headteacher: Miss Ellie Green BA Hons, PGCE, NPQH

Newsletter 19

Friday 30th January 2026

Dear Edinburgh Families

It has been a lovely week here at Edinburgh Primary School. We are busy preparing for E-Safety Week, Children's Mental Health Week, and World Book Day which takes place after the half term break. Look out for more information about how we will be celebrating these events and bringing learning to life.

**Breakfast Club Census begins on Monday 2<sup>nd</sup> February.** The more children who come along to our FREE Breakfast Lounge, the longer we will be able to keep it running. Children are welcome from 08:00 for a healthy breakfast in a family-style setting, followed by calming activities, or an energising boost for those who like to begin their day in an upbeat way.

Best wishes

*Ellie Green*

Miss E Green - Head Teacher

In this week's newsletter you will find information about the following:

- EPS Values Celebration
- **Understanding Autism: MHST Coffee Morning**
- EPS Star Awards
- EPS Healthy Eating Awards
- House Points
- EPS Celebrate Good Attendance
- Class Corner
- Diary Dates

## EPS Values Celebration

**Respect - Resilience - Kindness -  
Positivity – Confidence – Aspiration**

Congratulations to EPS Values Award winners. It is my favourite moment of the week to hear the teachers talk so enthusiastically about the amazing achievements and values of our children.

**Banyan:**

*Alessia - Kindness*

**Ginkgo:**

*Eliz - Resilience*

**Hornbeam:**

*Yahya - Kindness*

**Pine:**

*Muhammad - Kindness*

*Layyana - Aspiration*

**Oak:**

*Talia - Confidence*

*Anas - Resilience*

**Tamarind & Maple:**

*Amelia - Confidence*

*Alvin - Positivity*

*I am very proud of you! all*

Thank you to everyone who came along to support today. It means a lot to us all.

## Parent Coffee Morning: Understanding Autism



The MHS Team will be hosting a FREE coffee morning on  
**Monday 2<sup>nd</sup> February @ 09:00 in the ELSA room.**



The theme is "Understanding Autism". Perhaps your child has a diagnosis, or is part way through this lengthy process; maybe you recognise some traits of autism in your child.

**Everyone is welcome! This is a great opportunity to connect with other parents facing similar challenges. We would love to see you.**

## Year 6 SATs Briefing for Parents/Carers

We will be holding a short briefing about KS2 SATs on **Tuesday 10<sup>th</sup> February at 08:45**. This will be a good opportunity to share information about preparation for SATs in May and how we can work together to help each child to feel successful. There will be time for you to ask questions. The meeting will take place in the Y6 classrooms and should last for 20-30 minutes. The children will attend too so that they can see us working together as a team.



## EPS Star Awards



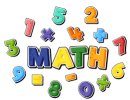
### Reading Stars:

Cenk - Banyan  
Yanis - Oak  
Muhammed - Gingko



### Spelling & Handwriting:

Ariana - Banyan  
Matthew - Gingko  
Noufel - Tamarind  
Mahia - Oak



### Mathematician of the Week:

Oleksandra - Hornbeam  
Nasar - Banyan  
Thanasis - Oak  
Danna - Pine  
Nuh - Maple

## EPS Gold Awards

*Yanis, Anas, Erin and Summayyah  
from Oak Class*

Well Done! This is a fantastic achievement.

## EPS Healthy Eating Awards



**Banyan:** Khalil, Yunus, Amaris  
**Hornbeam:** Matthew, Alekc **Gingko:** Nicole  
**Oak:** Danaisha, Madina **Pine:** Zara

Please remember we are a healthy school. Crisps, sweets or chocolate bars are **not** allowed.

## House Points

Our winning house this week is:



There will be a reward for the winning House at the end of this half term.

## EPS Celebrate Good Attendance

Week beginning: 26/01/2026

Class:	Team Attendance:	
Banyan	93.0%	
Gingko	95.4%	
Hornbeam	96.1%	1st
Oak	95.5%	3rd
Pine	96.0%	2nd
Tamarind	94.7%	
Maple	95.2%	
<b>Whole School</b>	<b>95.1%</b>	

Whole school attendance since September is 95.07 %

Let's aim for every class to be in the GREEN zone throughout February.

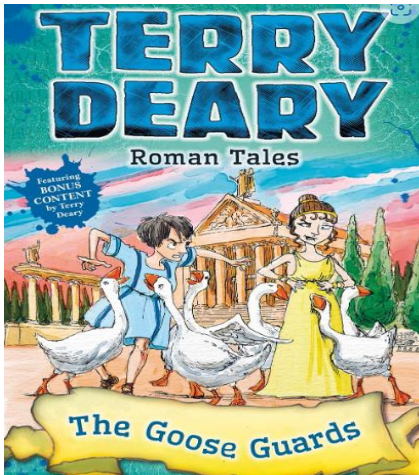
Please see the attendance ladder below.  
Where does your child stand on this ladder?

### Attendance Ladder



# Gingko & Hornbeam Class

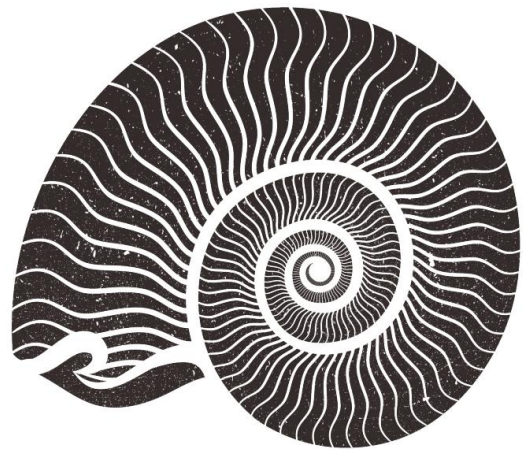
During the term, Gingko/Hornbeam class have shown energy, enthusiasm, and curiosity as they have continued their learning, embracing all the exciting opportunities the term has to offer. It has been wonderful to see their creativity, imagination, and confidence flourish.



**In English**, the children have started their new book, *The Goose Guards* by Terry Deary. The story follows Brutus, a trainee priest, as Rome faces an attack from the Gauls and a surprising rescue saves the day.

The children have been developing their writing by creating vivid setting descriptions and using complex sentences to make their stories more interesting. It has been fantastic to see their creativity, imagination, and confidence grow as they explore this exciting Roman tale.

**Art Attack**- This term in Art, Gingko/Hornbeam have been exploring ammonites through printmaking. The children have been learning about surface and colour, experimenting with textures, layers, and techniques to create their own ammonite-inspired prints. They have shown great creativity and attention to detail, bringing the intricate spiral shapes of ammonites to life. It has been wonderful to see their confidence and imagination thrive as they develop their artistic skills and try new techniques.



## **PSHE – Jigsaw Dreams and Goals**

In Gingko/Hornbeam children have been exploring Dreams and Goals. They have been thinking about their personal ambitions, setting realistic goals, and discussing the steps needed to achieve them. They have worked on developing resilience, motivation, and teamwork, sharing ideas with confidence and supporting each other's learning. It has been wonderful to see the children reflect on their aspirations and take positive steps towards achieving them.

# Diary Dates



<b>February</b>	
Monday 2 <sup>nd</sup> February	MSHT Coffee Morning – Understanding Autism 9.00am – 10.00am
Wednesday 4 <sup>th</sup> February	Year 2/3 Natural History Museum Trip
Tuesday 10 <sup>th</sup> February	KS2 SAT's Briefing @ 8.45am
Friday 13 <sup>th</sup> February	Last day of term – normal finish
Monday 16 <sup>th</sup> – Friday 20 <sup>th</sup>	Half Term Holiday
Monday 23 <sup>rd</sup> February	Children return to school
<b>March</b>	
Wednesday 4 <sup>th</sup> March	Class Photographs
Tuesday 10 <sup>th</sup> March	Parents Evening 3.30pm – 5.00pm
Wednesday 11 <sup>th</sup> March	Parents Evening 3.30pm – 6.30pm
Monday 16 <sup>th</sup> March	Rec & Year 1 Fluoride Varnish Programme
Friday 20 <sup>th</sup> March	Year 4/5 Pedestrian Training
Tuesday 24 <sup>th</sup> March	Science Dome Years 2/3 and 4/5
Friday 27 <sup>th</sup> March	Last day of term early finish 1.45pm
Monday 30 <sup>th</sup> – Friday 10 <sup>th</sup> April	Easter Holiday
<b>April</b>	
Monday 13 <sup>th</sup> April	Children return to school
<b>May</b>	
Monday 4 <sup>th</sup> June	Bank Holiday
Monday 11 <sup>th</sup> - Thursday 14 <sup>th</sup> May	SATs Week
Tuesday 12 <sup>th</sup> May	Year 2/3 London Mithraeum Bloomberg Trip
Friday 22 <sup>nd</sup> May	Last day of term – normal finish
Monday 25 <sup>th</sup> May	Bank Holiday
Tuesday 26 <sup>th</sup> May – Friday 29 <sup>th</sup> May	Half Term Holiday
<b>June</b>	
Monday 1st June	Curriculum Day Children off School
Tuesday 2 <sup>nd</sup> June	Children return to school
Monday 8 <sup>th</sup> – Wednesday 10 <sup>th</sup> June	Year 5/6 Residential Grosvenor Hall
Monday 15 <sup>th</sup> – Friday 19 <sup>th</sup> June	Year 6 Bikeability
Monday 29 <sup>th</sup> June - Friday 10 July	Year 6 Swimming
<b>July</b>	
Wednesday 1 <sup>st</sup> July	Proposed Year 6 Transition day
Friday 17 <sup>th</sup> July	Last day of term early finish 1.45