



**Edinburgh Primary School**  
 97 Queens Road  
 Walthamstow  
 E17 8QR

Tel: 02085096180

Email: school@edinburgh.waltham.sch.uk

Website: Edinburgh.waltham.sch.uk

**Headteacher: Miss Ellie Green BA Hons, PGCE, NPQH**

**Newsletter 29**

**Friday 1<sup>st</sup> May 2026**

Dear Edinburgh Families

What a beautiful day to round off a busy week here at Edinburgh Primary School! We are very lucky to have such wonderful grounds to enjoy when the weather is good.

I met with School Council earlier this week. They are gathering ideas and working together to plan some enhancements to lunchtimes. Exciting new resources are on their way to encourage teamwork and imaginative play for all ages.

Enjoy the Bank Holiday weekend!

Best wishes

*Ellie Green*

Miss E Green - Head Teacher

In this week's newsletter you will find information about the following:

- EPS Values Celebration
- Reminder
- EPS Healthy Eating Awards
- EPS Celebrate Good Attendance
- Class Corner:
- Diary Dates

**EPS Values Celebration**

**Respect - Resilience - Kindness -  
 Positivity – Confidence – Aspiration**

Congratulations to EPS Values Award winners. It is my favourite moment of the week to hear the teachers talk so enthusiastically about the amazing achievements and values of our children.

**Banyan:**

*Samuel - Positivity*

**Ginkgo:**

*Hashir - Confidence*

**Hornbeam:**

*Yuxin - Resilience*

**Pine:**

*Alaya - resilience*

*Linaz - Aspiration*

**Oak:**

*Mahia - Extra Special Achievement*

*Emilia - Resilience*

**Tamarind & Maple:**

*Osman - Kindness*

*Humaira - Kindness*

*Anaya - Extra Special Achievement*

*I am very proud of you! all*

Thank you to everyone who came along to support today. It means a lot to us all.

**EPS Star Awards**



**Reading Stars:**

*Ailin - Banyan*

*Yacine - Ginkgo*

*Lawrence - Pine*

*Emilia - Oak*

*Kaya - Tamarind*



**Spelling & Handwriting:**

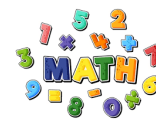
*Afaan - Banyan*

*Layyanna - Pine*

*Hashir - Ginkgo*

*Erin - Oak*

*Humaira - Maple*



**Mathematician of the Week:**

*Malaika - Hornbeam*

*Taliyah - Oak*

*Minahil - Pine*

*Malakai - Maple*

*Serena - Banyan*

## Reminder

Please remember that money, toys, trading cards and sweets must not be brought into school.



## EPS Healthy Eating Awards



**Banyan:** Naila, Nasar, Hanna  
**Gingko:** Eliz **Hornbeam:** Aaliya, Daryna  
**Oak:** Thanasis **Tamarind:** Yahya, Yasin

Please remember we are a healthy school.  
Crisps, sweets or chocolate bars are **not** allowed  
in school or on school trips.

## EPS Celebrate Good Attendance

Week beginning: 27/04/2026

Class	Team Attendance	
Banyan	92%	
Gingko	96.5%	<b>2nd</b>
Hornbeam	96.5%	<b>2nd</b>
Oak	92%	
Pine	98%	<b>1st</b>
Tamarind	95.8%	
Maple	95.8%	
Whole School	95.1%	

**Whole school attendance since  
September is 94.96%**

## Attendance Ladder



# Pine Class Corner

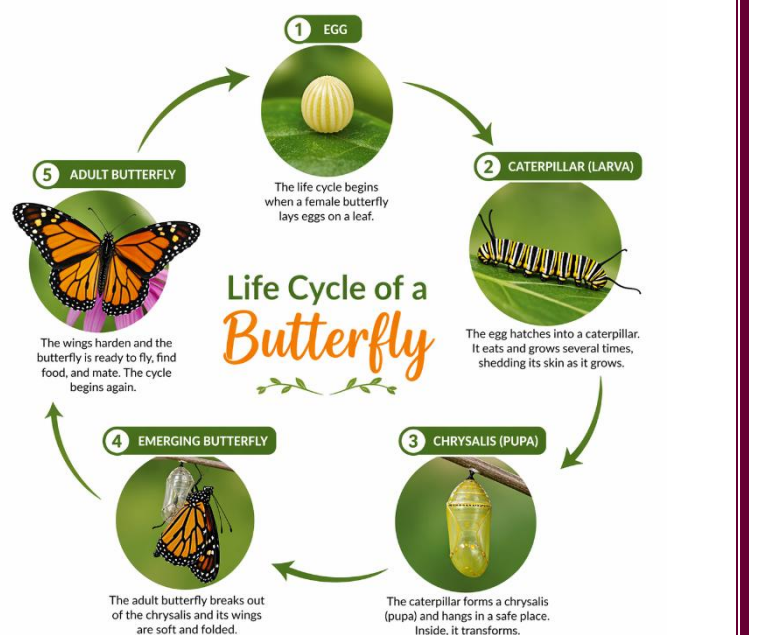
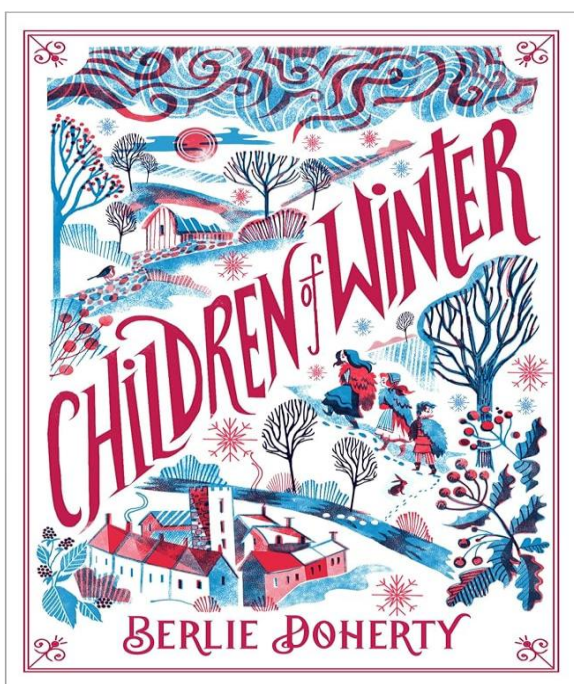
This term continues to be filled with excitement, curiosity, and a real love of learning as the children explore a range of new topics across the curriculum!

In English, the children have begun reading *Children of Winter* by Berlie Doherty. This powerful story follows a young girl named Catherine who is forced to leave her home during a harsh winter in a time of great hardship. Along her journey, she faces difficult challenges, meets new people, and shows remarkable resilience and courage. Building on this, the children are now preparing to write informative texts about the Black Plague, based on what they are learning in History. They are focusing on using formal language, organising their ideas clearly, and refining their punctuation to ensure their writing is both accurate and engaging.

In Maths, Year 5 have been learning about angles and shapes. They have been identifying, measuring, and comparing different types of angles, as well as exploring the properties of 2D and 3D shapes. Did you know? A full turn is 360 degrees—and this comes from ancient mathematics, where people linked circles to the number of days in a year! The children have been enjoying using protractors and applying their knowledge to solve practical problems.

In Science, the children have been exploring habitats and life cycles. They have been learning about how different plants and animals are suited to their environments, and how living things grow and change over time. From the life cycle of a butterfly to understanding how animals adapt to survive in different habitats, the children have been developing their observation and enquiry skills through engaging activities and discussions.

It has been a great week and we are very proud of the enthusiasm and effort the children continue to show in all areas of their learning!





# Diary Dates

May 2026	
Monday 4 <sup>th</sup> May	Bank Holiday
Tuesday 4 <sup>th</sup> May	Year 4/5 Tate Modern Trip
Monday 11 <sup>th</sup> - Thursday 14 <sup>th</sup> May	SATs Week
Tuesday 19 <sup>th</sup> May	Parent Meeting Grosvenor Hall residential Trip @ 3.15pm
Friday 22 <sup>nd</sup> May	Last day of term – normal finish
Monday 25 <sup>th</sup> May	Bank Holiday
Tuesday 26 <sup>th</sup> May – Friday 29 <sup>th</sup> May	Half Term Holiday
June 2026	
Monday 1st June	Curriculum Day - Children off School
Tuesday 2 <sup>nd</sup> June	Children return to school
Monday 8 <sup>th</sup> – Wednesday 10 <sup>th</sup> June	Year 5/6 Residential Grosvenor Hall
Monday 15 <sup>th</sup> – Friday 19 <sup>th</sup> June	Year 6 Bikeability
Monday 29 <sup>th</sup> June - Friday 10 July	Year 6 Swimming
July 2026	
Wednesday 1 <sup>st</sup> July	Proposed Year 6 Transition day
Friday 17 <sup>th</sup> July	Last day of term early finish 1.45
September 2026	
Wednesday 2 <sup>nd</sup> September	Curriculum Day - children off School
Thursday 3 <sup>rd</sup> September	Children return to School